



MONTHLY MEMBERSHIP PROGRESS REPORT

District 13 OH7

Results as of: 05/31/2019

GMT: CINDY GREGG

LOCATION OHIO

GMT CA

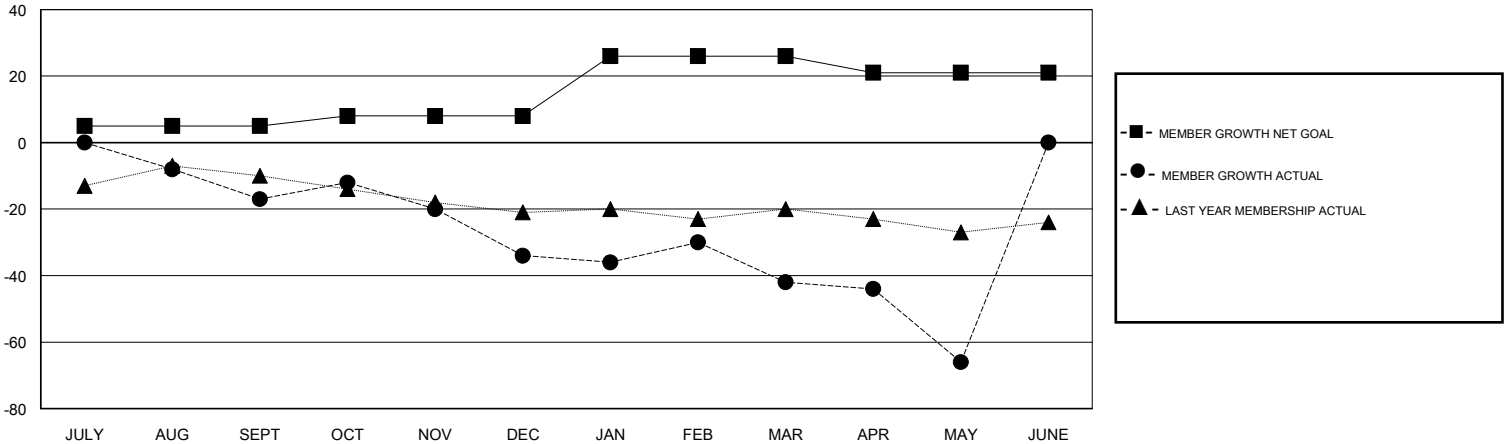
Clubs			
RESULTS FOR 2018-2019			
QUARTER	NEW CLUB GOAL	NEW CLUBS	DROPPED CLUBS
JULY/AUG/SEPT	0	0	0
OCT/NOV/DEC	0	0	1
JAN/FEB/MAR	1	0	0
APR/MAY/JUNE	0	0	0

Members			
RESULTS FOR 2018-2019			
QUARTER	MEMBER GROWTH NET GOAL	MEMBER GROWTH ACTUAL	DROPPED MEMBERS ACTUAL (including transfers)
JULY/AUG/SEPT	5	19	32
OCT/NOV/DEC	3	19	35
JAN/FEB/MAR	18	31	30
APR/MAY/JUNE	-5	11	33

GOALS AND ACTUAL NEW CLUBS CUMULATIVE



GOALS AND ACTUAL MEMBERS CUMULATIVE



DROPPED CLUBS: 1	29 CLUBS OF 55 ADDED 1 OR MORE NEW MEMBERS	<u>GENDER DISTRIBUTION</u>	
DROPPED MEMBERS		MALE	965 (67.67%)
DECEASED	31	FEMALE	461 (32.33%)
CLUB CANCELLED	10	Women Percentage Fiscal Year Goal: 33%	
OTHER	89	TOTAL FAMILY UNIT MEMBERS	348
TOTAL	130	FAMILY MEMBERS PAYING HALF DUES	176

[CLICK HERE FOR CUMULATIVE MEMBERSHIP DATA](#)